

CONFERENCE SPONSORS



LANDCOM



SydneyOlympicPark



mobile muster



Selective Tours

HOLIDAY ESCAPE



AGTA • 19
THE INNOVATIVE GEOGRAPHER

Time for a holiday?

JOIN US AT THE AGTA CONFERENCE GOLD COAST 1ST TO 4TH OCTOBER 2019



f AGTA 2019: The Innovative Geographer **t** @agta2019 **@** geoteachers2019

P 0400 121 311 **E** admin@agta2019.com.au **W** www.agta2019.com.au

REBECCA NICHOLAS AGTA CONFERENCE ADMINISTRATOR

THE PLACE OF GEOGRAPHY

Reflecting on the PAST, assessing the PRESENT and
shaping the FUTURE



The
Geography Teachers Association
of NSW & ACT Inc.

Tuesday April 2 2019

DRONE
COURSE
Presidents
Suite
Level 3



Welcome

Shannon Foster

Shannon Foster is a Sydney based D'harawal Saltwater Knowledge Keeper and artist who has been teaching her family's stories for over twenty years to a range of audiences in learning institutions such as Sydney Olympic Park, Taronga Zoo, Australia Museum, Sydney University, UTS and Australian Catholic University.

Shannon is currently undertaking her PhD in the Centre for the Advancement of Indigenous Knowledges at the University of Technology, Sydney researching and documenting her family's Narinya stories (Living Dreaming).

The Geography Teachers
Association of NSW & ACT
celebrates

The International Year of Indigenous Languages



Social, cultural & environmental sustainability

Innovation & Sustainability Panel

Professor Alex McBratney

University of Sydney, Sydney Institute of Agriculture

Dr Louise Crabtree

Senior Research Fellow University Western Sydney

Cara Brigham

Landcom

Dr Maria Vozzo

Macquarie University & Sydney Institute Marine Science

Reflecting on the PAST, assessing the PRESENT and shaping the FUTURE

SUSTAINABLE & PRODUCTIVE AGRICULTURE



Netherlands is about 186 times **smaller** than Australia.
It is also the world's second largest exporter of food.

What questions do we have about Australian agriculture?
To develop inquiry questions we need to know our subject.

<https://www.nationalgeographic.com/magazine/2017/09/holland-agriculture-sustainable-farming/>

My inquiry questions

Can Australian soils support increased food production?

Is Australia able to grow more food on less land?

Is technology a solution ?

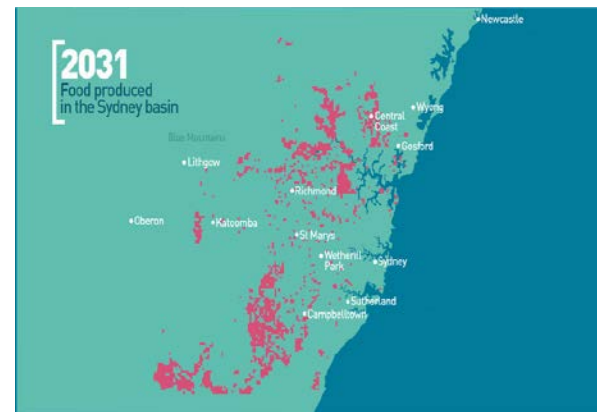
Is Australia an innovator in agriculture?

To what extent will architecture play a role in future food production?



Professor Alex McBratney

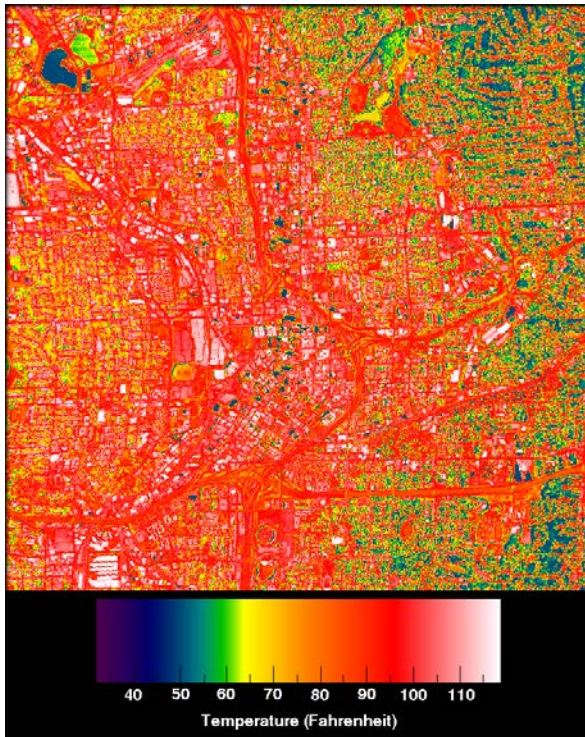
Innovation in Agriculture What will the future look like?



URBAN PLACES SUSTAINABILITY & LIVEABILITY

Challenges

Transport
Water
Heat
Density
Services
Employment
Air quality
Congestion
Affordability



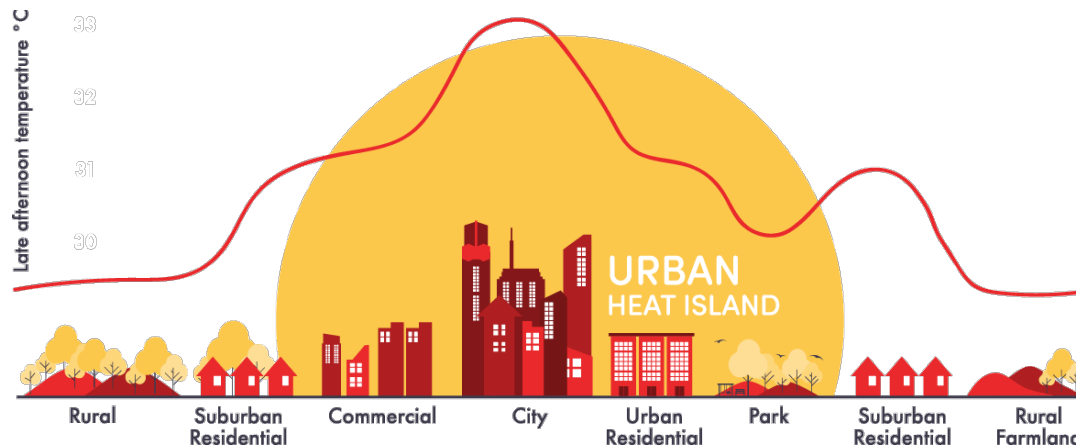
My inquiry questions

How do we make our suburbs cooler?

Are we destined to a future life spent indoors?

What role does architecture play in urban futures?

Places are for people – are we planning for people or places?



CoLAB 2018

Australia's leading researchers on smart cities, sustainable development, placemaking, urban design, urban agriculture, collaborative robotics and other technologies collaborated at Parramatta North Heritage Core to discuss the challenges and opportunities for addressing complex urban issues.



<https://www.landcom.com.au/approach/research-and-learning/co-lab2018>

Dr Louise Crabtree

Cooling the Commons

WESTERN SYDNEY
UNIVERSITY



Institute for Culture
and Society

Cooling the Commons

Pilot Research Report

OCTOBER 2016

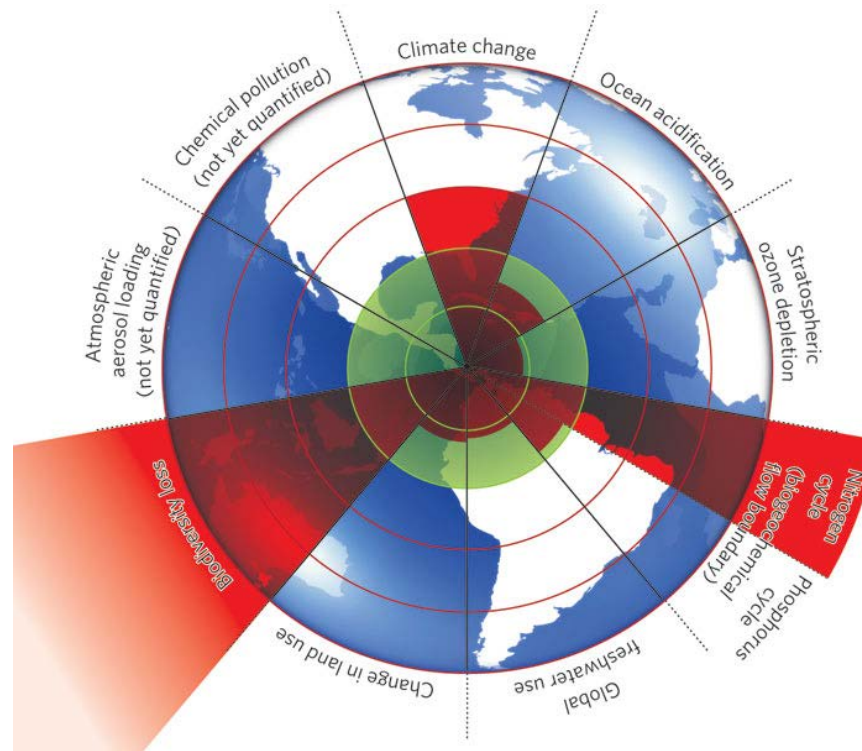


Cara Brigham

Creating liveable
&
sustainable places



ENVIRONMENTAL CHANGE & BIODIVERSITY



<http://www.ecoequity.org/2009/09/planetary-boundaries-loom/>

My inquiry questions

Why is biodiversity a key to future sustainability?

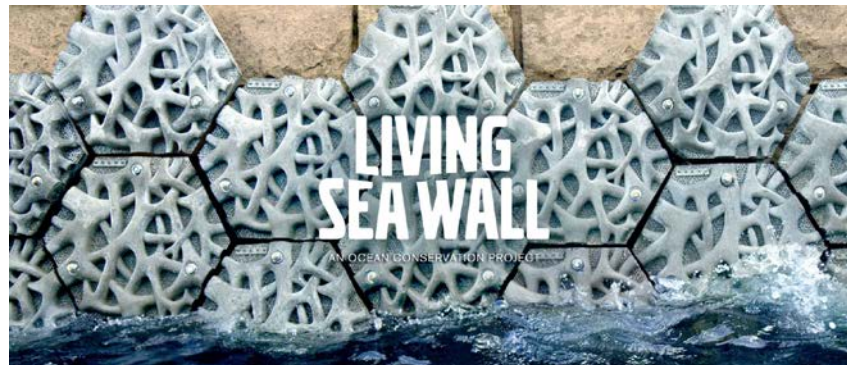
Is it possible to undo past biodiversity losses to build
environmental resilience ?

Can innovative architecture play a role in
environmental sustainability ?



Dr Maria Vozzo

Living seawalls and marine biodiversity





YOUR
QUESTIONS
TO
OUR
PANELISTS



ALWAYS

ASK GREAT QUESTIONS

ABOUT GEOGRAPHY



#LOVEGEOGRAPHY

THINK ABOUT

GEOGRAPHY

INVESTIGATE. QUESTION.
EXPLORE.

What now?

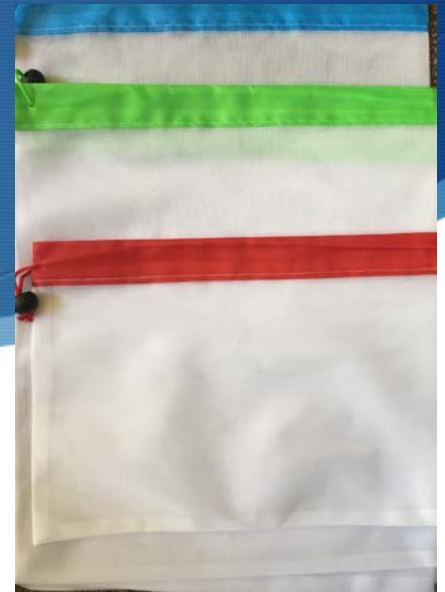
AWARDS CEREMONY

MORNING TEA
SESSIONS 4 & 5

LUNCH
SESSION 6 & PLENARY

HOME

- Plenary at 3.45 here
 - Return name tags
 - Collect prizes – winners contacted
- Complete Evaluation



HAVE A GOOD DAY



Welcome to

Wangal land

Today we meet on Wangal land.

Sydney Olympic Park today is within the asserted traditional cultural boundary of the Darug language group, of which the Wanngal clan is said to have belonged.

Descendants of Darug traditional owners play a custodial role in the preservation of Aboriginal cultural heritage and are actively involved with archaeological and historical research in and around Homebush Bay.

http://www.sopa.nsw.gov.au/our_park/history_and_heritage/indigenous_history



I acknowledge

I would like to acknowledge the Wangal people as the traditional custodians of the land on which we meet.

I pay my respects to the Elders, both past and present, and extend that respect to other Aboriginal people present here today.

